

IMAGINATIVE HANDS-ON DISCOVERIES AT MINNESOTA CHILDREN'S MUSEUM

Minnesota
Children's
Museum
Smart Play



EDUCATOR GUIDE • 2011–2012

NEW DISCOVERIES EVERY VISIT AT THE MUSEUM!

Reserve Your Museum Field Trip

Reserving a self-guided visit allows your group to actively explore, learn, and discover the Museum's interactive and engaging exhibits at your own pace.

Grade level: PreK - 4

Group size: Minimum 20 students, maximum 120 students
Ratio of one adult (admitted free) for every four students

Cost:

Standard rate: \$4.75 per student/extra adult
Access Program rate: \$2.50 per student/extra adult

Available: Wednesday - Friday all year and Mondays May 21 through August 27, 2012

First Thursday of the month available exclusively for PreK - K
Call 651-225-6002 for availability.

The Access program is designed to reach non-profit groups and organizations that serve economically disadvantaged children and families. In order to qualify organizations must prove that at least 70% of the children and families they serve are economically disadvantaged.

DISCOVER OUR EXCITING 2011-2012 EXHIBITS



September 10, 2011 - February 5, 2012

Step into the pages of seven beloved children's books and enter a world of early literacy adventures, including *The Tale of Peter Rabbit*, *If You Give a Mouse a Cookie*, *Chicka Chicka Boom Boom*, and other favorites. ♦



September 24, 2011 - January 8, 2012

Become scientists for a day by exploring rainforests from around the world. ♦ ♦



January 21 - May 13, 2012

Explore all of the slimy, mushy, oozy, scaly, stinky, gross (yet scientific) things that occur everyday in the human body.

Build Community with Family Nights

Build school community and involve your students' families in their education by hosting a family night at the Museum.

Group size: Up to 200 (children and adults)

Cost:

Standard rate: \$450 for up to 200 people,
\$2 per additional person over 200
Access Program rate: \$275 for up to 200 people,
\$1 per additional person over 200

Available:

Tuesday - Friday, 6 - 8 p.m.

Call
651-225-6002
to reserve
today!



February 18 - June 3, 2012



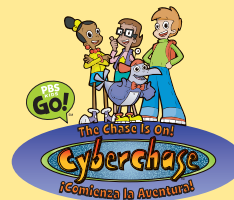
Inspired by the Mister Rogers' Factory Tours

Operate machines and use real factory tools to discover how familiar childhood objects are transformed from raw materials into finished products. ♦

Curious George Let's Get Curious!

May 26, 2012 - January 27, 2013

Activities invite visitors to learn like Curious George™ as they explore key concepts in science, math and engineering. ♦ ♦ ♦



June 16 - September 23, 2012

Based on the Emmy-award winning PBS series CYBERCHASE™, the exhibit presents math in an engaging, visually rich environment, allowing children to explore math with an investigative, positive attitude. ♦

NEW ADVENTURES AT YOUR LOCATION!

Save Travel Time and Money with Museum-to-Go Classes

Bring the Museum experience to your site. These hands-on, multi-sensory classes make learning creative and fun. A Museum educator will visit your classroom and facilitate a 50-minute class. Reach more students and make the most of learning by scheduling three sessions of the same class on the same day at one site.

Class size: Maximum 28 students per session
Ratio 1 adult per 7 students

Cost: \$150 for one session, \$240 for two sessions
\$330 for three sessions
Plus round-trip mileage

Available: Monday - Friday; call 651-225-6002 for availability
Available within a 50-mile radius of Minnesota Children's Museum

Meets Minnesota State Standards

Arts ● Health ● Science ● Social Studies ●

Meets National Standards

Math ◆ Pre-reading Skills ◆ Science ◆ Technology ◆
Technology Literacy ◆

EXPLORE OUR PERMANENT GALLERIES



Help connect your students to the people, places and cultures in their community. ●



Spark students' creativity and problem-solving as they investigate how their world works. ●



Topics:

Culture

Growing Up Global ● PreK - 2

Take an immersive look into cultures from around the world and celebrate what makes us all unique.

Health

Hands-on Health ● PreK - 1 and 2 - 4

Discover the amazing ways the human body works and practice daily habits necessary for a long and healthy life.

Science

Amazing ANTics ● PreK - 2

Your class will become junior entomologists and explore the amazing life of ants through hands-on activities.

Dino Dig ● PreK - 1 and 2 - 4

Aspiring paleontologists will uncover clues from the past and learn all about the ancient creatures we all love.

Rock On! ● 1 - 3

The world of rocks comes alive as students discover how rocks are formed and ways they can be identified.

Social Studies

Community Faces and Places ● K - 4

Students create their own community while learning about collaboration.

Exciting
new class!
Growing Up
Global



Nurture your students' understanding of Minnesota's forest, prairie and wetland habitats in this two-story gallery. ●



Students will enjoy art and nature together in this outdoor gallery.
Open May - September. ●



Minnesota Children's Museum

Smart Play

10 West Seventh Street • St. Paul, Minnesota 55102

MCM.org

RETURN SERVICE REQUESTED

Ask about
**BUS
DISCOUNTS!**

**CALL NOW
to reserve
your group!
651-225-6002**

**Minnesota
Children's Museum**
is the trusted expert
for hands-on
learning.

Voted one of

**2011
Parents
10 BEST
CHILDREN'S
MUSEUMS**

Non-Profit Org.
U.S. Postage PAID
Permit No. 2254
Twin Cities, MN